



Berry *Small Farm* Field Days



FRI 8 & SAT 9 SEPT 2023
BERRY SHOWGROUND



Millpaca - Breeding Perfection



Alpacas are a relatively new farm species to Australia, having arrived as recently as 1987. But they have a long and noble history in the culture and economy of South America, where they have been domesticated as the sheep of the Andes for over 6000 years.

In the barely two decades since their introduction, leading Australian breeders like Millpaca have applied to alpacas those same principles of breeding and husbandry which were applied to the Spanish Merino in the previous 200 years establishing international standards for excellence in fleece production. Today Australia is poised to lead the New World

in the production of high quality alpaca fleece and importantly for a sustainable meat industry.

Millpaca is a professionally-run alpaca stud farm, based in Berry NSW, that specialises in breeding pure-bred alpacas of exceptional quality. Our services include selling animals to boost your stock numbers, and hiring out award-winning stud males for mating purposes.

When you purchase an alpaca from Millpaca; or utilise our stud service, you really can be assured that they are among the best Huacaya alpaca stock. Our slogan 'breeding perfection' reinforces our ongoing aim to breed the best, and that's the Millpaca difference.



millpaca

BREEDING PERFECTION

Contact Ian Frith for more information on (02) 4464 1728 or visit our website at www.millpaca.com

Welcome

to our 10th Berry Small Farm Field Days held at the beautiful Berry Showground with exhibitors from all over, to interest both small landholders and backyard gardeners alike.

The **Millpaca Livestock Pavilion** has a huge variety of farm animals on display and is sure to be a big hit with the kids.

There are also a number of interesting talks and demonstrations in the **Berry Vet Talk Tent**, and there are several exhibitors under our 'Sustainable Living' banner

We thank all of our sponsors, particularly our **Gold Sponsors** – **Millpaca, 2ST/PowerFM**. Also, the many exhibitors for coming along and displaying their products and services.

The **Berry Small Farm Field Days** is a fund-raising event staged by the **Rotary Club of Berry** and we hope you enjoy all the Field Day has to offer.



GOLD SPONSORS



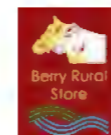
SILVER SPONSORS



BRONZE SPONSORS



SUPPORTERS



Berry Small Farm Field Days



Berry Showground

Friday 8 September

8.30am to 4pm

Saturday 9 September

8.30am to 3pm

ENTRY:

\$15 per person

Children under 15 years FREE

For full details go to

www.berryrotary.org.au

ENQUIRIES:

Ph: (02) 4403 0300

Contents



- 4 PROGRAM OF TALKS**
Plan your day at a glance
- 5 SPEAKER PROFILES**
The people behind the demos and talks
- 8 SUSTAINABLE LIVING FEATURE**
Check out our Sustainable Exhibitors at the Berry Small Farm Field Days
- 12 MAP & EXHIBITOR LISTING**
How to get around on the day
- 14 WHAT TO SEE**
A selection of the great exhibits you'll see in 2023
- 18 PRODUCT DIRECTORY**

Whilst every effort has been made to ensure the accuracy of the information in this magazine, the publisher assumes no responsibility for errors or omissions or for any consequences of reliance on information in this publication. The Berry Small Farms Field Days magazine prints advertisements approved by advertisers but gives no warranty and makes no representation as to the truth, accuracy or sufficiency of any advertisement or any description, photograph or statement therein. All rights reserved.



A Great 'Country' Day Out for the whole family...

Shoalhaven City Council

Silver Sponsor of the Berry Small Farm Field Days

PROGRAM OF TALKS & DEMONSTRATIONS

TOPIC	TIME	PRESENTED BY	ORGANISATION
FRIDAY			
BERRY VET TALK TENT			
Sustainable Agriculture	9.30 - 10.15	Adam Walmsley	Buena Vista Farm
Small Animal Health	10.30 - 11.15	Bryden Krebs	Berry Vet Clinic
Buxus Balls of Berry	11.30 - 12.15	Jason Hodges	Landscaper & Grower
Exotic Plants	12.30 - 1.15	Clinton Bramston	Bamboo South Coast
Seaweed Farming	1.30 - 2.15	Dr. Pia Winberg	Venus Shell Systems
LIVESTOCK AREA			
Heavy Horse Display	10.30 - 11.15	Polly Divine & Pete Devenish	Clyde Manor Clydesdales
TOPIC	TIME	PRESENTED BY	ORGANISATION
SATURDAY			
BERRY VET TALK TENT			
Small Farm Animals	9.15 - 10.00	Bryden Krebs	Berry Vet Clinic
Exotic Plants	10.15 - 11.00	Clinton Bramston	Bamboo South Coast
Living Sustainably	11.15 - 11.45	Barbara Khalifa	
In Your Garden	12.00 - 12.45	John Gabriele	ABC 97.3 - The Compost Heap
Emergency Animal Disease	1.00 - 1.45	Matthew McNaughton	Local Land Services
Seaweed Farming	2.00 - 2.45	Dr. Pia Winberg	Venus Shell Systems



The Heavy Horse Display will be held at the Livestock Area on Friday morning.

GUEST SPEAKER PROFILES

CLINTON BRAMSTON BAMBOO SOUTH COAST

Bamboo South Coast is an expansive nursery located at Coolangatta and stocks many rare colourful plants, bamboo & Indonesian imports. They are also landscape design and construction specialists, and Clinton will impart general do's and don'ts to help you design something special.

POLLY DIVINE AND PETE DEVENISH

Renown trainers of the majestic Clydesdale carriage horses, Pete and Polly will demonstrate and explain the harnessing, leading and riding of their magnificent horses.

JOHN GABRIELE (ABC ILLAWARRA - THE COMPOST HEAP)



John Gabriele has long been interested in gardening and having presented The Compost Heap for many years, he finds the enjoyment of gardening and the sharing of ideas a highlight. A general plants man, John's interests in horticulture are as diverse as his audience and he

promotes gardening as a life skill to all levels of the community.

John is a patron of the Friends of the Wollongong Botanic Gardens and the Australian Plants Society Shoalhaven Group.

JASON HODGES



As a teenager, Jason studied Landscape Horticulture and Construction at the respected Ryde TAFE (and actually ended up teaching the course there later in life). He is a four-time Melbourne International Flower and Garden Show (MIFGS) Gold medalist, and in 2012 made his Show Garden debut at London's prestigious Chelsea Flower Show.

BARBARA KHALIFA



BRYDEN KREBS BERRY VET CLINIC



Bryden Krebs will give a very interesting talk on farming animals and explain how best to look after your favourite small animals. He will happily answer your general questions about common problems with domestic small animals.



Barbara and Omar Khalifa live on a small property near Berry where they live a good, comfortable life endeavouring to live sustainably: growing most of their food, caring for the soil and nurturing wildlife and biodiversity, while minimising their fossil fuel use and other polluting habits. Barbara will talk about daily life solutions for lightening our impact on the planet.

Speaker profiles cont. on page 7...

Contd. from page 5.

GUEST SPEAKER PROFILES

MATTHEW McNAUGHTON
 LOCAL LAND SERVICES

Matthew is a Senior Biosecurity Officer and will talk on the current topical subjects of Foot and Mouth Disease, and Lumpy Skin Disease.

DR. PIA WINBERG
 CEO & CHIEF SCIENTIST - VENUS SHELL SYSTEMS PTY. LTD.

CEO - PHYCOHEALTH PTY. LTD.
 HONORARY FELLOW - SCHOOL OF MEDICINE, UNIVERSITY OF WOLLONGONG



Pia is a marine molecular ecologist, taking sources of novel biochemistry from the oceans to the human world. Her research spans marine ecosystems, to applied technology that links marine molecules to human health, nutrition and biotechnology.

To make an impact, Pia has commercialised Australia's first seaweed farming system for human food, skin care and health products. The brand is PhycoHealth which is now sold online and in

retail throughout Australia. The seaweed grows 50 x more food per area than other crops and leaves no waste, reduces greenhouse gases, uses no water, protects coastal ecosystems and relieves pressure on land for food production.

ADAM WALMSLEY
 BUENA VISTA FARM



At Buena Vista Farm, we're dedicated to practicing sustainable agriculture and encouraging people to make connections with where their food comes from.

We are passionate about strong local food systems and about nutrient-dense, handmade whole foods in everyday kitchens.



Berry Vet Clinic

Established in 1953 - An integral part of the community every since

High quality care for all animals, tailored to suit every family and farmer!

We aim to provide you with excellent service, clear communication on what is happening and options for treatment.

We provide an exceptional level of care to all our patients and treat them and you like one of the family.



Catch one of our information sessions on Friday and Saturday



84 Queen St, Berry, NSW, 2535 (02) 4464 1899 berryvet.com.au

MEET YOUR LOCAL BERRY TEAM

Julie and Kim understand that each customer is unique, and will tailor recommendations to suit your individual needs.



We offer

- Term Deposits
- Loans
- Business Banking
- Insurance & Green Slips

... and so much more!

Shop 3, Broughton Court
 115 Queen St, Berry
 4428-9750
 horizonbank.com.au



BERRY IGA

How the locals like it.

PART OF AN AUSTRALIA-WIDE NETWORK OF OVER 1300 INDEPENDENT FAMILY OWNED BUSINESSES SITTING AT THE HEART OF LOCAL COMMUNITIES.

OPEN 7 DAYS

6.00AM - 9.00PM

FIND US AT:

123 QUEEN STREET BERRY NSW 2535

CONTACT US ON:

02 4464 1239

shop@igaberry.com.au berryigaplusliquor





Sustainable Living Feature

Rotary's Involvement in Protecting the Environment

Rotary International is a worldwide volunteer organisation established in 1905 and has over 1.4 million members in more than 46,000 clubs.

Rotary has seven areas of focus:



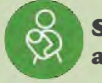
Promote peace



Fight disease



Provide clean water, sanitation, and hygiene



Save mothers and children



Support Education



Grow local economies



Protecting the Environment



The Rotary Club of Berry encourages supporting the environment in several ways. For instance, Club members planted 100 mature trees along a shared pathway at Boongaree Berry in 2021 to mark 100 years of Rotary in Australia.

We have now added a sustainable living feature to the Small Farm Field Days to demonstrate how people can get involved in protecting the environment and live sustainably.

Look out for the Sustainable Living Feature flag at the event to see the exhibitors at the Berry Small Farm Field Day this year.



Local Land Services

Local Land Services helps secure the future of agriculture and the environment for NSW communities.

We're here on the ground when it matters, with knowledge, networks and expertise in biosecurity, agriculture, emergency and natural resource management.

To find out more, contact your local office:

South Coast: 13 Schofields Lane, Berry

Phone: 02 4464 6000

Office hours: 8:30am - 4:30pm

www.lls.nsw.gov.au



Rotary EV Car Display

9.00 am to 12 Noon, Saturday

Here's an opportunity to explore a range of electric vehicles (EVs) and ask local owners about their experiences with their EV.

The special display of EV cars of different brands is located just inside the Albany Street entrance on the western side of the Showground.

The owners of these cars have volunteered to show their cars and answer any questions you may have.



LOOK FOR THE SUSTAINABLE LIVING FLAG

EXHIBITORS

Just a few of the cars that will be on display on Saturday.



MG HS PHEV



POLESTAR 2



TESLA MODEL X



KIA EV6 GT-LINE



KIA EV6 HORIZON BANK



GWM ORA PREMIUM





EXHIBITORS

SITE 4B



Havenwood Tiny Homes

Rick Smith 0418 293 757

If it's time for a change, a tiny house could be the perfect solution. Our tiny homes provide a new take on the tradition by compacting standard living spaces and turning them into something innovative, mobile and fun.



Berry Landcare

Kelvin Officer 0427 255 417

Berry Landcare was established in 2014 and operate as a grouping of 12 local worksites with active participation from 270 members and friends. Working on private and public land we undertake joint projects through partnerships with other community groups. Our objectives include: the conservation management and rehabilitation of natural habitats, their ecologies and connectivity; achieving sustainable and resilient natural ecosystems; and educating and engaging with our local community.

SITE 7C



Lone Fig Environmental

Leonard White 0406 412 911

Lone Fig Environmental specialises in bush regeneration, weed and feral animal control throughout the Shoalhaven and Southern Highlands. We have been operating since 2016. Our clientele base includes small private lots, large rural farms, National Parks Conservation, and business estates. Because our team has decades of combined bush regeneration experience, we are able to provide the highest quality services optimised to each specific site.

SITE 1A



SITE 2A

ReKindle Me

Wade Cawley 0488 723 390

Rekindle Me is a business born out of the idea that less should be going to waste but instead rekindled. I give old electronics a second chance to be rehomed or taken apart to be recycled for the materials that make up an item.



SITE 2A



TURFCO

Georgia Wedd 02 4464 2033 sales@turfco.com.au

Turfco is the only Lawn Solutions Accredited Grower on the NSW South Coast. With our range of premium turf varieties, we'll be sure to find your perfect lawn match. We consider ourselves as lawn experts and when we sell a lawn, we want you to have it for life! We can provide great advice on ground preparation, the selection of your new lawn, and lawn maintenance.

PHYCO HEALTH



Pia Winberg 0429 338 846

Pia is a marine molecular ecologist who has commercialised Australia's first seaweed farming system for human food, skin care and health products. The brand is PhycoHealth which is sold online and in retail throughout Australia. The seaweed grows 50 x more food per area than other crops and leaves no waste, reduces greenhouse gases, uses no water, protects coastal ecosystems and relieves pressure on land for food production.

SITE 1A

SITE 1A



Ultimate Cycles

Russ Phelan 0418 679 948 russ@ultimatecycles.com.au

South Coast Electric Bikes was created in 2018 by a dedicated proponent of the benefits of e-bikes.

Our business is combined with Ultimate Cycles Nowra and has grown to be the largest bicycle store on the South Coast.

We are located just off the Princes Hwy at 15 Haigh Ave Nowra, and have floor stock from many manufacturers in styles to suit all needs.

Garden Display Area



Near Café Rotary

Boomerang Bags

Elizabeth Dubbelde 0431 663 189

Established in 2016 Boomerang Bags Berry was created as a platform to support the diversion of post-consumer material (waste) into reusable bags to replace plastic bags and most importantly, start conversations.

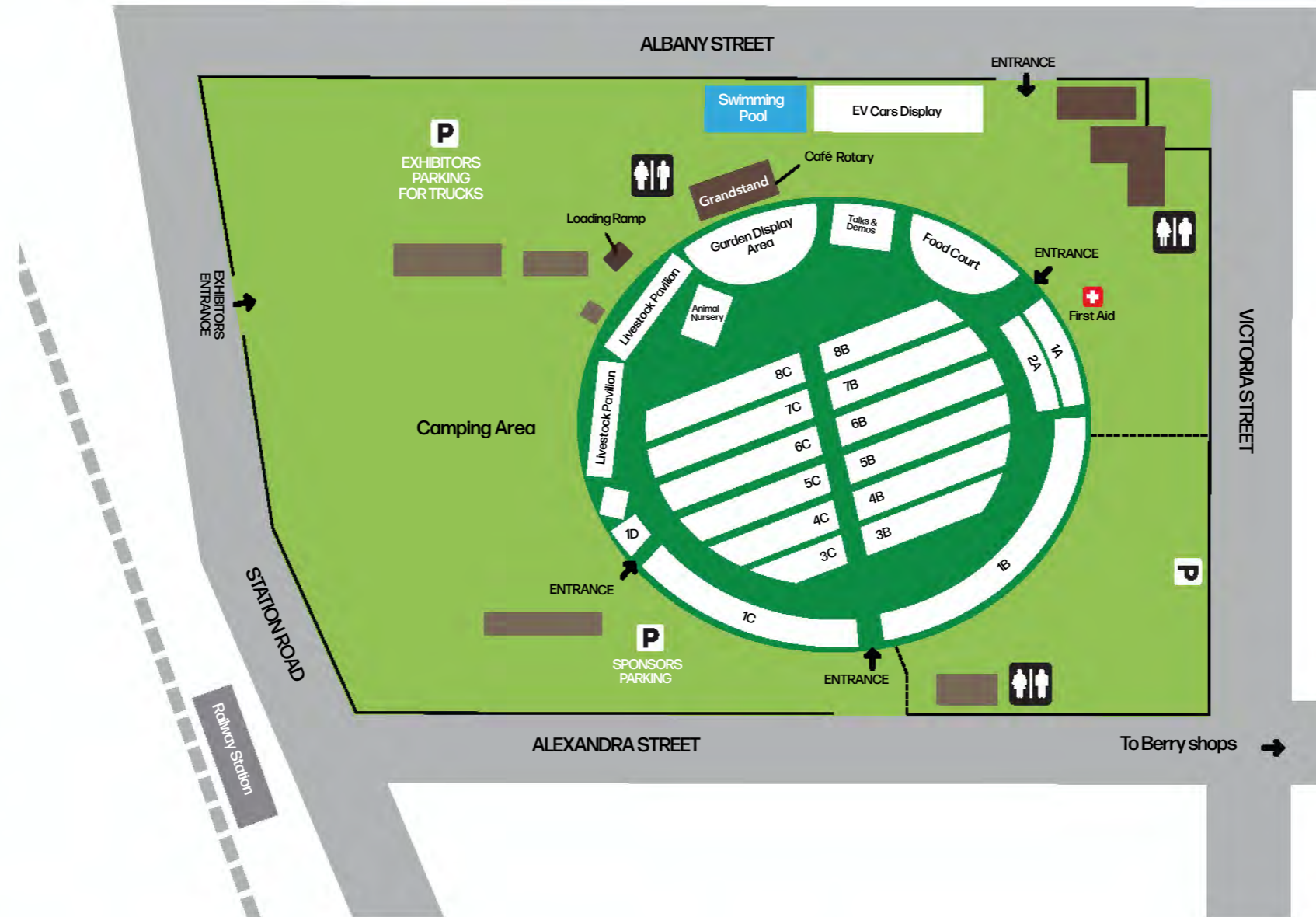
We work hard, laugh a lot, and all of us are committed to living in a world we would rather reuse than recycle or throw away.





EXHIBITORS

EXHIBITOR NAME	SECTION
2WP / Tool Wizard, Corry Marketing	8B
Adjusta Mattress Aust	8B
Armour Group	5B
Australian Geranium Society	Garden
Australian Lowline NSW Promotion Group	Livestock
Berry Mens Shed	Garden
Berry Rural Store	8C
Berry Show Society	3C
Berry Spinners & Weavers	5C
Berry/Shoalhaven Landcare	7C
BNS Party Stuff	Food Court
Bonsai by John	Garden
Breastscreen NSW	2A
Broughton Vale Rural Fire Service	1C
Bunyip Hemp	2A
Callipari Wines	8B
CanAssist Shoalhaven	Food Court
Charlie the bullock	Livestock
Chipstar Australia P/L	1B
Clyde Manor Clydesdales	Livestock
Copper Tree Sculptures	1A
Copper Tree Sculptures	Garden
Country Motor Co	4C
Creative Bird/Vintage & Country Babes	1A
Cutabove Tools	Garden
Dept Primary Industries (Fisheries)	2A
Escargot Café	Food Court
Ezy Table	6B
Forge 47 Metalworks	Garden
Garlic Essentials	4B
Goulburn Western Wear	1A
Greenway Turf Solutions	5C
Greg Lynch Mobile Farm Service	4C
Gwenry Gates Mini Donkey	Livestock
Hardwood Mills	1B
Havenwood Tiny Homes	4B
Javalife Coffee	Food Court
Jervis Bay Lemon Bar	Food Court
LandHQ	4B
Leanisha Miniature Ponies	Livestock
Local Land Services	7C
Lone Fig Environmental	1A
Lucas Mill	4C
Maison Mauve Llamas	Livestock



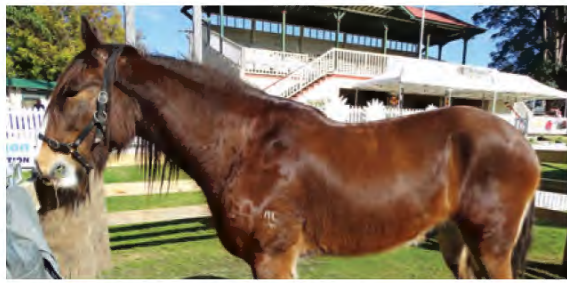
EXHIBITORS

Mama Kim's Kitchen	Food Court
Matilda's Farmyard Nursery	Livestock
Millpaca Alpacas	Livestock
Ministry of Rusty Relics	3C
Miss Flourish	1A
Mohair Australia	Livestock
My Coffee Addiction	Food Court
My Mates Relish	2A
Native Grace Nursery	Garden
Natural Pancake Co	Food Court
Nature Lodge Optics	4B
Nick Nack Gallery	1B
Nigerian Dwarf Goats	Livestock
Nigerian Dwarf Dairy Goats	Livestock
Nomad Kitchen	Food Court
Nowra City Holden	1C
Nowra Kubota	1B
Nowra Polaris	8B
Nowra Truck & Tractor	6B
NSW Farmers	1A
Nutrien Water	1C
NYC Finance	1A
Palisade Miniature Herefords	Livestock
Poultry	Livestock
Quantum NRG	2A
Rekindle Me	2A
Rural Crime Squad	2A
Rusty Rose Designs	Garden
SES NSW	4C
Shoalhaven Beekeepers	7C
Shoalhaven Gozleme	Food Court
Shoalhaven Vintage Machinery Club	1C
ShowMow Racing	5C
South Coast Decorative Concrete	1B
South Coast Electric Bikes	1A
South Nowra Mowers & Powersports	7B
Step Flex	2A
Sylvia & Co	1A
Tiny Solar Homes	4B
Tornado Pumps & Sprayers	4B
Turfco	2A
University of Wollongong	2A
Vella Stockfeeds	1B
Wandering Wood Fired Oven	Food Court
WFI Insurance	1A
Whipbird Environmental	Garden
Wood-Mizer Australia	1B
Wrights Chainsaws	Garden



What to see...

CLYDESDALE HEAVY HORSES



Clydesdales are one of the most recognisable of the heavy horse breeds and are one of the tallest, with adult males standing at up to 19 hands (1.9m). They originated in Scotland in the area of the Clyde River. Clydesdales are happy giants with an easy-

going temperament and calm demeanour. Although nowadays mostly used to pull horse-drawn carriages, they also make excellent riding horses.

Enquiries: Pete Devenish and Polly Divine, Clyde Manor Clydesdales 0412 427 070

MINIATURE DONKEYS



Miniature Donkeys are a different breed to regular donkeys. They are a Mediterranean breed originally from Sicily and Sardinia and first imported into Australia in the 1990s.

Naturally small in size, they have not been 'bred down'. They are

cute, furry, calm and friendly. The grey-dun colour is the most common coat colour. They can be trained to walk on a lead.

Enquiries: Abby at Gwenyn Gates Miniature Donkey Stud Farm 0419 221 633

NIGERIAN DWARF MILKING GOATS



Nigerian Dwarf goats are naturally small in size, friendly and gentle. They will find a place on small acreages aiding in weed control and as mini milkers. Their milk has a high butterfat content and can be used to produce a cheese that is valued for its earthy

flavour. Goats milk cheese can be substituted in practically any recipe where cows milk cheese is used.

Enquiries: Catherine at Free Selectors Dairy Stud 0424 350 321

MINIATURE PONIES



Miniature ponies originate from the Falabella pony of Argentina. They have been bred for their small size, gentle nature and calm disposition. Miniature ponies can be shown competitively or kept as pets, with the added advantage of mowing your lawn.

Because of their small size they require less paddock space than full sized ponies. They do well on pasture alone.

Enquiries: Leanne at Leanisha Miniature Pony Stud 0417 432 393

AUSTRALIAN LOWLINE CATTLE

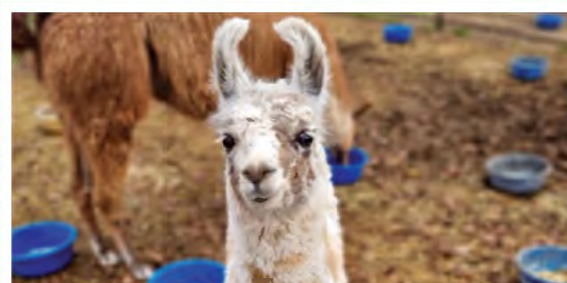


Australian Lowline cattle are descendants of pure Aberdeen Angus cattle. Lowlines are about 60% the size of standard Angus, but with shorter legs and more compact frame. They are naturally polled and have a docile temperament. Their high

efficiency at converting grass to meat means that steers can finish on grass from 14 months. Ideal for both small area and commercial beef breeders.

Enquiries: Bill Bryden 0421 280 458, NSW Lowline Promotion Group

LLAMAS



Although both are members of the Camelid family, llamas are distinguished from alpacas by their larger size and their 'banana-shaped' ears as compared with the 'pixie' ears of the alpaca. Handsome with regal bearing

describes the llama as compared to the fluffy cuteness of the alpaca. Unlike alpacas that are bred for their solid colour fleece, llamas are usually multi-coloured.

Enquiries: Rosie at Maison Mauve Llamas 0417 203 751

What to see...

ALPACAS



Alpacas were imported into Australia in 1987 from Peru and Bolivia. They are farmed primarily for their fleece production, although there is a gourmet meat market. The luxury fibre that they produce has outstanding fineness, softness and warmth

and come in a range of natural colours from white through fawns, browns, greys and true black. Alpacas are used as herd guards for sheep and goats.

Enquiries: Ian Frith at Millpaca Alpacas 02 4464 1728

MOHAIR AUSTRALIA



Mohair luxury fibre is produced by Angora goats. The fleece, predominantly white, grows in ringlets all over the goat's body. They are shorn twice a year. The price paid for fleece is continually improving meaning increased profitability of farming Angora

goats. There is also a meat market. Goats are 'browsers' rather than 'grazers' and enjoy eating thistles and woody weeds such as blackberry.

Enquiries: Reg and Gill Scott 02 4657 2293

CHARLIE AND HARLIE



Charlie the Brahman Bull and his son Harlie, have made an appearance at field days and agricultural shows for a few years now. They are always popular with visitors to the field days, both young and old. Accompanying

Charlie and Harlie will be Gary Nelson and his wife, Robyn.

Gary also runs a local Livestock Transport business and is well known in the farming community. **Enquiries: Gary Nelson 0412 429 320**

NIGERIAN DWARF GOATS AND AUSTRALIAN MINIATURE GOATS



Springhill Farm has Nigerian Dwarf goats and Australian Miniature Goats. They grow to the size of a medium dog and make wonderful pets. The Nigerian Dwarf goats are a great option for anyone who wants to

milk them and make cheese, and soap etc. Mini goats are friendly and full of personality and make good family pets. They are also suitable as show animals.

Enquiries: Natasha at Springhill Farm 0427 835 426

MINIATURE HEREFORD CATTLE



Miniature Herefords were developed in Texas for over 30 years from full-sized Herefords and first imported into Australia in 1995 from the USA. Herefords are distinctive with their red coats and white faces. They are one of the most common breeds

of cattle throughout the world. Miniature Herefords have all the attributes of full-sized Herefords but in a smaller package.

Enquiries: Sue Parish, Palisade Miniature Herefords 0429 965 361

MATILDA'S FARMYARD NURSERY



Matilda's Farmyard Nursery has been operating for 22 years. It gives children a chance to get up close and personal with some farm animals. For the younger visitors, there are baby farm animals to pat. The chickens, ducks, rabbits and guinea pigs

are very popular with youngsters. You might meet Idol the donkey or Lucy the Llama.

Enquiries: Venetia 0403 621 676

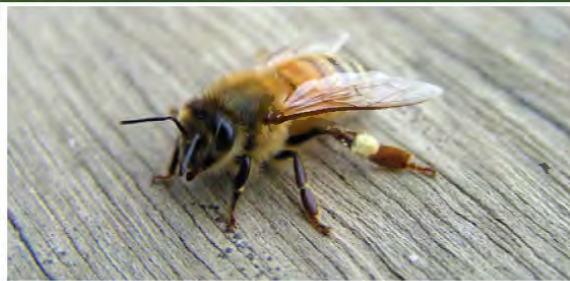
POULTRY



There are at least 50 breeds of chickens and 25 breeds of ducks in Australia, ranging from backyard layers to exhibition birds. Those with coloured or patterned feathers are attractive birds to have in your backyard,

and also supply you with fresh eggs. Some serious poultry breeders choose to keep one of the rare heritage breeds of poultry so that the breed doesn't die out.

SHOALHAVEN BEEKEEPERS



Look into the fascinating world of the honeybee at the Shoalhaven Beekeepers site.

Taste some honey and find out what it takes to have your own backyard hive and produce your own pure honey.

The Beekeepers group meets 3rd Wednesday monthly at Nowra.

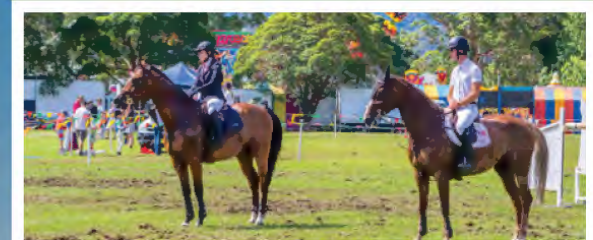
Enquiries:
Laurie 0428 441 667

TOOLS!



From chainsaws to pruning saws, all sorts of hand tools, power tools and everything in between, you will find them at the Field Days.

BERRY SHOW



The 2024 Berry Show, 3 & 4 Feb, will showcase the district's best livestock, produce & arts & crafts...

Visit the Berry Show marquee to see some rare and unusual poultry, pavilion exhibits and cute dairy calves. We are seeking our Berry Show Young Woman

of 2024 (formerly Showgirl), to be our Show ambassador. Chat to Committee Members at the Berry Show marquee and find out how you can become involved in your local Berry Show or contact the Secretary by email: berryshow@virtualcity.com.au.

TRACTORS



If you are thinking that you might like a tractor to make life easier on your property you'll be able to check out all the options from 25 Hp to 150Hp machines, plus slashers, mulchers, diggers, excavators and much more.

LAWNMOWERS



Mowing your lawn can be either a chore or a joy. You can compare ride-ons, zero turns, electric mowers, trimmers, chippers, ATVs ... whatever you need to keep your place looking good and have fun doing it.

DECORATE YOUR GARDEN



Decorating your garden can really make your place look great. Hand-made imaginative garden art or sculptures are often hard to find ... or maybe that special plant you have been looking for. You may well find it at the number of exhibitors showing their wares.



36 Years' Experience in Music and Music Education

Band / Orchestral Instruments and Accessories

Sheet Music | Gifts and Apparel | Audio Equipment and Accessories

BERRY MUSIC CENTRE - Your Online Music Store

berrymusiccentre@gmail.com | Phone: 02 4464 1284

www.berrymusiccentre.com.au

Parnell + Brien
Solicitors



Congratulations to Lindsay Brien on his retirement

After more than 45 years practising law, Lindsay Brien, of Parnell + Brien Solicitors, has now retired from legal practice.

Lindsay has provided expert legal services to the Berry community since 1990! Specialising in conveyancing, personal injury, commercial and estate law, Lindsay had the opportunity to work with a vast number of local community members and businesses during his career.

The team at Parnell + Brien Solicitors wish to congratulate Lindsay on his lengthy and accomplished career. Lindsay brought a

wealth of legal experience and knowledge of the local area to the team, and his contribution will be missed by all. We wish him many happy years of retirement to enjoy with his wife Anne and family.

Lindsay's clients can rest assured that the fantastic legal team at Parnell + Brien Solicitors, under Principal Solicitor and Managing Director, Liz Parnell, will continue to provide exceptional legal services on their behalf. The team works collaboratively with each individual client, recognising their unique circumstances and prioritising their needs.

(02) 4464 2158 • www.parnellbrien.com.au • 2/68 Albert St, Berry NSW 2535

RayWhite

Trusted Local Agent for over 30 Years

At Ray White Rural Shoalhaven, we understand that your property is one of your most important assets, so our local property experts are here to help. Proudly supporting our Local Community since 1992.

02 4464 1755
78 Queen Street Berry
rural.shoalhaven.nsw@raywhite.com

RayWhite
RURAL SHOALHAVEN

PRODUCT DIRECTORY

PRODUCT	EXHIBITOR NAME	SECTION	PHONE
Adjustable Massage Mattress	Adjusta Mattress Aust	8B	0437 822 696
ATV's	Nowra Polaris	8B	0414 873 727
Banking and Finance	NYC Finance	1A	0431 375 975
Beekeeping	Shoalhaven Beekeepers	7C	0415 052 130
Binoculars and Optical Goods	Nature Lodge Optics	4B	0415 516 616
Bonsai Plants and Garden Related Giftlines	Bonsai by John	Garden	0400 240 513
Bush Regeneration	Lone Fig Environmental	1A	0406 412 911
Catering - GF Food	Escargot Café	Food Court	0428 883 334
Catering - Korean BBQ	Mama Kim's Kitchen	Food Court	0434 573 001
Catering - Mobile Juice Cart	Jervis Bay Lemon Bar	Food Court	02 4447 8590
Catering - BBQ & Grill	CanAssist Shoalhaven	Food Court	0412 641 071
Catering - Coffee Outlet	Javalife Coffee	Food Court	0432 511 901
Catering - Coffee Outlet	My Coffee Addiction	Food Court	0421 560 212
Catering - Dutch Pancakes	Natural Pancake Co	Food Court	0430 223 458
Catering - Ice Cream	BNS Party Stuff	Food Court	0413 387 246
Catering - Meat Wraps	Nomad Kitchen	Food Court	0427 400 331
Catering - Turkish Gozleme	Shoalhaven Gozleme	Food Court	0410 458 577
Catering - Woodfired Pizza	Wandering Wood Fired Oven	Food Court	0439 722 162
Chainsaws, Brushcutters, Mowers	Wrights Chainsaws	Garden	0419 214 636
Childrens Country Clothing	Creative Bird/Vintage & Country Babes	1A	0409 037 808
Chippers, Composters, Mulchers	Chipstar Australia P/L	1B	0414 889 854
Community Entertainment	Show Mow Racing	5C	0456 222 276
Community Fire Response	Broughton RFS	1C	0493 086 465
Community Health - Breast cancer	Breastscreen NSW	2A	0407 491 536
Community Service for Farmers	NSW Farmers	1A	0498 559 565
Concrete Product Specialist	South Coast Decorative Concrete	1B	0404 892 121
Copper Water Features	Copper Tree Sculptures	Garden	0411 838 278
E Waste Recycling	Rekindle Me	2A	0488 723 390
E-Bikes	South Coast Electric Bikes	1A	0418 679 948
Environmental, Biosecurity, Agricultural Displays	Local Land Services	7C	1300 795 299
Farm Machinery	Armour Group	5B	0458 467 734

PRODUCT DIRECTORY

PRODUCT	EXHIBITOR NAME	SECTION	PHONE
Fashion and Hats	Sylvia & Co	1A	0409 995 120
Fishing Education	Dept Primary Industries (Fisheries)	2A	0438 245 190
Food Products	Garlic Essentials	4B	0401 268 211
Food Products	My Mates Relish	2A	0435 730 555
Garden Tools and Equipment	2WP / Tool Wizard, Corry Marketing	8B	0418 389 940
Gardening Tools	Cutabove Tools	Garden	0403 128 500
Green Power Transition	Quantum NRG	2A	0474 474 982
Hand Made Garden Ornaments	Berry Mens Shed	Garden	0448 712 131
Hand Made Metal Garden Art	Forge 47 Metalworks	Garden	0408 538 736
Health Products	Bunyip Hemp	2A	0410 319 862
Health Products	Step Flex	2A	0404 864 749
Home Products and Gifts	Miss Flourish	1A	0411 722 931
Insurance	WFI Insurance	1A	0498 559 565
Irrigation and Water Supply	Nutrien Water	1C	0411 874 685
Irrigation and Water Supply	Tornado Pumps & Sprayers	4B	0419 273 668
Lifestyle Furniture	Ezy Table	6B	0490 415 072
Livestock - Alpacas	Millpaca Alpacas	Livestock	0458 801 016
Livestock - Animal Nursery	Matilda's Farmyard Nursery	Livestock	0403 621 676
Livestock - Heavy Horses	Clyde Manor Clydesdales	Livestock	0412 427 070
Livestock - Llamas	Maison Mauve Llamas	Livestock	0417 203 751
Livestock - Lowline Cattle	Aust Lowline NSW Promotion Group	Livestock	0421 280 458
Livestock - Miniature Donkeys	Gwenry Gates Mini Donkey	Livestock	0419 221 633
Livestock - Miniature Hereford Cattle	Palisade Miniature Herefords	Livestock	0429 965 361
Livestock - Miniature Ponies	Leanisha Miniature Pony Stud	Livestock	0417 432 393
Livestock - Mohair Goats	Mohair Australia	Livestock	02 4657 2293
Livestock - Nigerian Dwarf Goats	Springhill Farm	Livestock	0427 835 426
Livestock - Nigerian Dwarf Dairy Goats	Selectors Nigerian Dwarf Goat Dairy Stud	Livestock	0424 350 321
Livestock - Poultry	Poultry	Livestock	0412 362 864
Livestock - Ridden Brahman Bullock	Gary Nelson - Charlie and Harlie	Livestock	0412 429 320
Metal Art and Garden Décor	Rusty Rose Designs	Garden	0407 204 324
Motor Vehicles	Country Motor Co	4C	0412 203 702

PRODUCT DIRECTORY

PRODUCT	EXHIBITOR NAME	SECTION	PHONE
Motor Vehicles	South Nowra Motor Group	1C	0419 437 251
Mowers, Chainsaws, Tractors, ATVs	South Nowra Mowers & Powersports	7B	0431 115 172
Native Plants and Bush Regeneration	Whipbird Environmental	Garden	0428 292 999
Native Plants, Gardening, Landscaping	Native Grace Nursery	Garden	0427 377 432
Plants	Australian Geranium Society	Garden	0402 203 436
Rural & Urban Sustainability	Berry/Shoalhaven Landcare	7C	0402 060 501
Rural Crime Prevention	NSW Police Rural Crime Squad	2A	0428 606 955
Rural Exhibition	Berry Show Society	3C	02 4464 1567
Rural Supplies	Berry Rural Store	8C	0413 751 361
Service of Farm Tractors and Implements	Greg Lynch Mobile Farm Service	4C	0414 800 359
Spinning Weaving, Felting	Berry Spinners & Weavers	5C	0411 040 976
State Emergency Services	SES	4C	138 737
Stockfeed	Vella Stockfeeds	1B	0400 445 998
Timber Milling Equipment	Lucas Mill	4C	0418 182 869
Timber Milling Equipment	Hardwood Mills	1B	0414 936 963
Timber Milling Equipment	Wood-Mizer Australia	1B	0493 364 173
Tiny Homes	Havenwood Tiny Homes	4B	0418 293 757
Tiny Homes	Tiny Solar Homes	4B	0418 411 099
Tractors & Agricultural Machinery	Nowra Kubota	1B	0438 047 410
Tractors & Agricultural Machinery	Nowra Truck & Tractor	6B	0448 121 367
Tractors & Agricultural Machinery	LandHQ	4B	0436 113 259
Turf Supplies	Turfco	2A	0425 810 193
Turf Supplies	Greenway Turf Solutions	5C	0472 502 903
UOW Promotion	University of Wollongong	2A	0411 469 529
Vintage Machinery	Shoalhaven Vintage Machinery Club	1C	0413 185 816
Vintage Machinery	Ministry of Rusty Relics	3C	0419 428 106
Western Wear Fashion	Goulburn Western Wear	1A	0419 215 307
Wines and Fortifieds	Callipari Wines	8B	0428 320 032

Rotary
Club of Berry



Working for the community

For over 60 years the Rotary Club of Berry has been working for the community both locally and overseas.

The funds raised from the Berry Small Farm Field Days go toward the Club's various community, youth development and international activities.

Along with our scholarship support of young students in our area with various youth development programs, during 2022-23 we have financially supported the following organisations: -

- Shoalhaven Homeless Hub
- Salt Care - Nowra
- Shoalhaven Youth Orchestra - In School Music Program
- CanAssist Shoalhaven
- PCYC Nowra Youth Crime Prevention Program
- Zonta - Birthing Kits Program
- Flagstaff - Ember Program
- Berry Silver Band

Within Australia we have also supported:

- Australian Rotary Health
- Flood relief donations to the Eugowra region

And overseas projects supported include:

- Rotary's End Polio Now campaign
- ShelterBox - Ukraine Disaster Relief
- The Rotary Foundation Annual Fund
- Assisi Centre for Social Justice and Peace Uganda - Young Mothers Education Program
- Fiji School Solar Project



To find out more about the Rotary Club of Berry visit our website www.berryrotary.org.au

The Shoalhaven & highlands
**BEST
MUSIC!**

**BETTER
MUSIC**
& More of it

**POWER
94.9
FM**

2ST
91.7
102.9
106.7

**Stolzy
& Abby**
for breakfast
6am-9am weekdays

Shoalhaven
breakfast with
Max
6am-9am weekdays

mornings with
**Graeme
Day**
9am-12pm weekdays



949powerfm.com.au | 2st.com.au

Download and listen for free on the  **iHeartRADIO** app.